



hotel nikko changshu

常熟日航酒店

No.18 Yijia Road, Changshu High-tech Industrial Development Zone, Jiangsu Province, China, 215500
中国江苏省苏州市常熟高新技术产业开发区羿家路 18 号 邮编215500
Tel 电话 86-0512-5220-1888 Fax 传真 86-0512-5257-5888
hotelnikkochangshu.com



迎 · 恭 候 莅 临

传承日式款待 · 传递真挚服务

常熟日航酒店地处常熟国家高新技术产业开发区核心地段，毗邻城市交通枢纽，直通昆承快速路，约半小时车程即达苏州市区。常熟日航酒店拥有288间各具风格的客房及套房，197间豪华服务式公寓，3个汇聚寰球美味的餐厅和酒吧，逾1,000m²的宴会会议空间，空中花园、室内泳池、儿童游乐室、日式汤池、棋牌室等完善设施。酒店紧邻昆承湖生态休闲区、永旺梦乐城购物中心，大隐于市，繁华商区与静谧绿荫和谐融合，为宾客打造舒适愉悦的旅居时光。



Welcome · About *the* Hotel

Inherit Japanese Hospitality • Deliver Sincere Service

Iconic located in Changshu National New High tech Industrial Development Zone, adjacent to transportation junction and conveniently access to Kuncheng Expressway, only takes around half-hour drive to Suzhou downtown. Hotel Nikko Changshu is equipped with 288 modern rooms and suites, 197 service apartments, 3 stylish restaurants and bars, over 1,000 m² meeting and event space, outdoor roof garden, indoor swimming pool, kids playroom, Japanese hot tub, card playroom. Close to Kuncheng Lake and AEON Shopping Mall, Hotel Nikko Changshu is hidden in the city, where the bustling harmoniously fusion with serenity, providing comfortable and pleasant stay for guests all around the world.

住·云端觅境

Accommodation · Unwind *over* Clouds

常熟日航酒店拥有288间各具风格的客房及套房，为商务旅程或休闲度假的宾客提供舒适的下榻体验。日式简约的客房装潢风格，全景落地窗设计，置身繁华市景或昆承湖美景。升级至行政客房，尽享额外礼遇及闲适时光。

Hotel Nikko Changshu is home to 288 guestrooms and suites, catering to business and leisure travelers alike. The distinctive Japanese style décor is filled with floor-to-ceiling windows, offering captivating views of the city or Kuncheng Lake in warm tones. Upgrade to Executive Room for extra privileges and comfort for an ultimate relaxation.



客房详情	面积 (m²)	楼层	数量
豪华房	32	5-19F	91
尊贵房	35	5-19F	113
行政房	32	20-25F	30
行政尊贵房	35	20-25F	40
行政套房	70	18-25F	13
至尊套房	145	25F	1

Room Type	Size (m²)	Floor	Room Numbers
Deluxe Room	32	5-19F	91
Superior Room	35	5-19F	113
Executive Room	32	20-25F	30
Executive Premier Room	35	20-25F	40
Executive Suite	70	18-25F	13
Royal Suite	145	25F	1



居·家外之家 Stay · Home Away *from* Home

常熟和家公寓拥有197间酒店服务式公寓，多款房型满足不同入住需求，设有客厅和客房独立区域，完善的家电配套设施，以家一般的舒适温馨和诚挚热情接待每一位入住的宾客。

Experience the ideal blend of location and welcoming services in Changshu Harmony Apartment. Feel at home in our one-, two-, and three-bedroom, total 197 apartments, and spread out separate sleeping and living spaces, with well-appointed home appliance.

房型	面积 (m²)	楼层	数量
单居室	30	3-27F	21
一卧室	45	3-25F	38
一卧室	55	5-27F	84
一卧室	65	3-27F	22
两卧室	70	10-25F	28
三卧室	88	26-27F	4

Room Type	Size (m²)	Floor	Room Numbers
Studio Room	30	3-27F	21
One Bed Room	45	3-25F	38
One Bed Room	55	5-27F	84
One Bed Room	65	3-27F	22
Two Bed Room	70	10-25F	28
Three Bed Room	88	26-27F	4

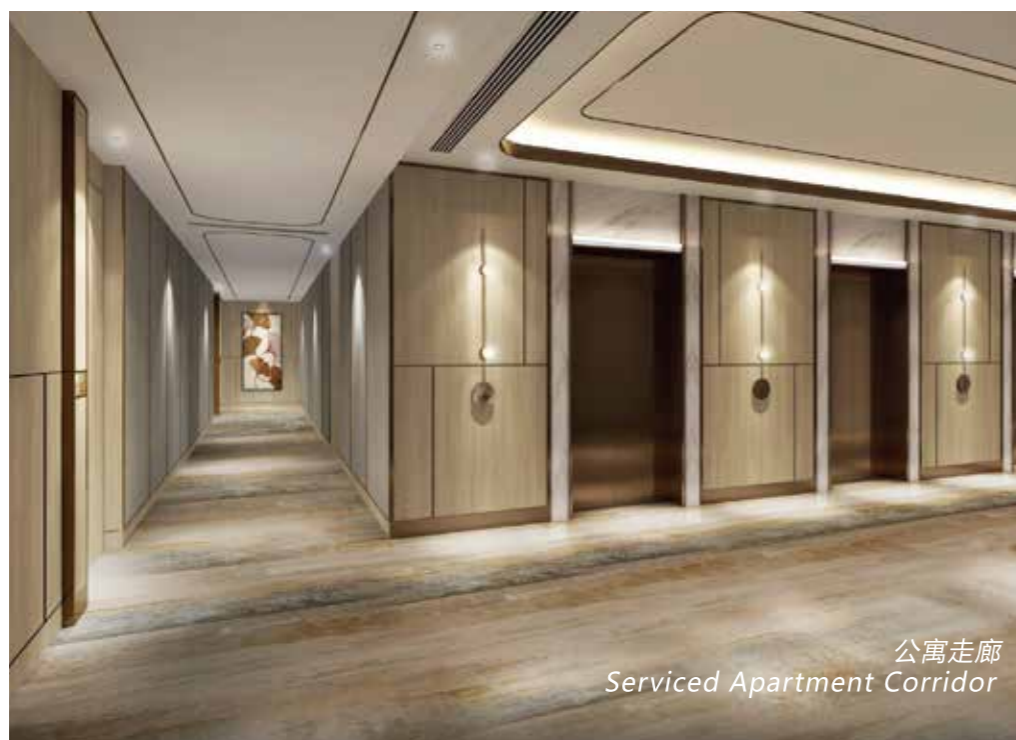


公寓大堂
Serviced Apartment Lobby

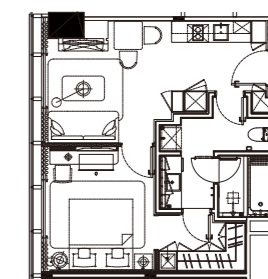
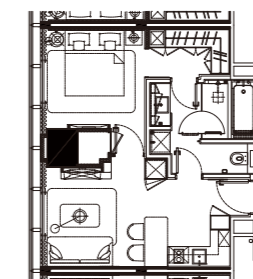
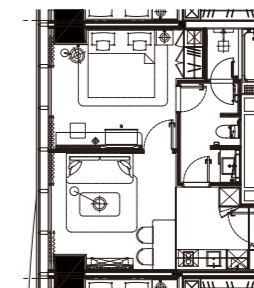
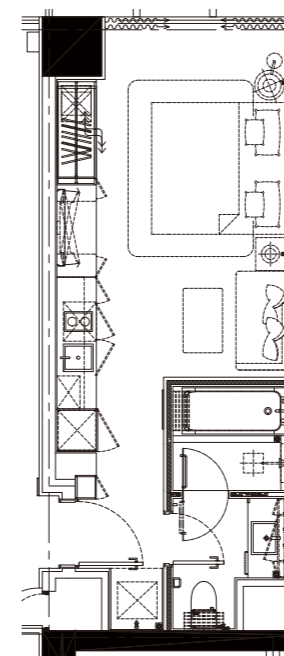


单居室 Studio Room 30m²

一卧室 One Bed Room 45m²

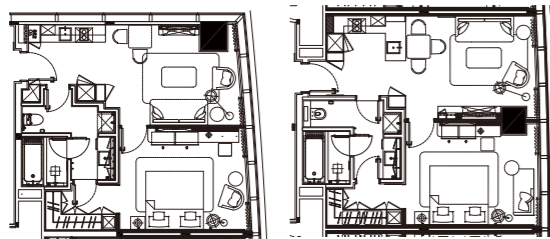
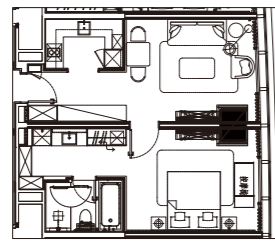


公寓走廊
Serviced Apartment Corridor

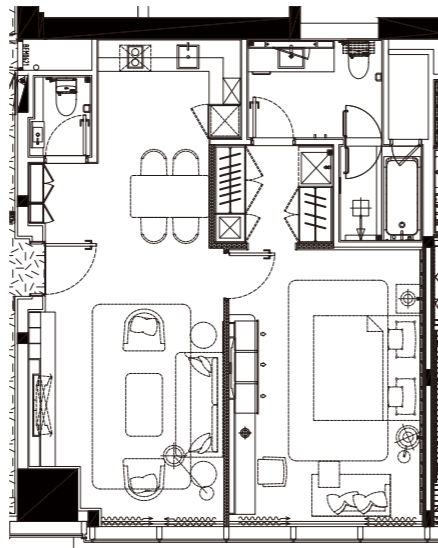




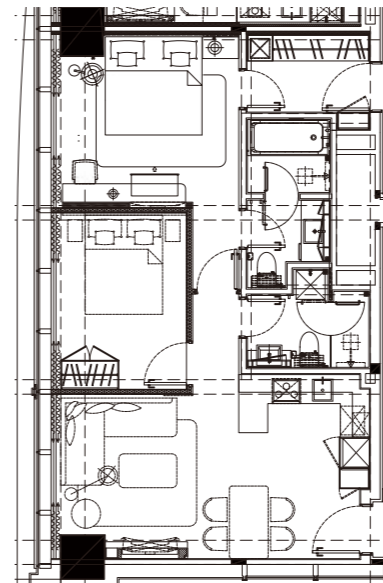
一卧室 One Bed Room 55 m²



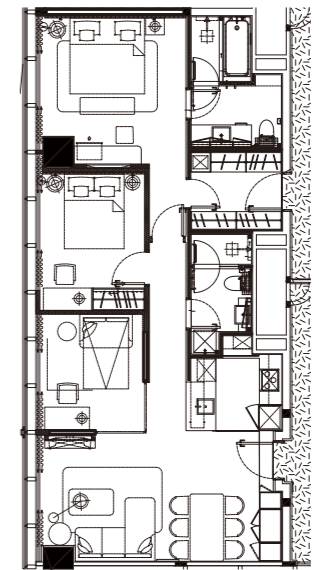
一卧室 One Bed Room 65 m²



两卧室 Two Bed Room 70 m²



三卧室 Three Bed Room 88 m²



品 · 风味四季

Dining · Taste *of* Seasonal

篆刻四季风味，融汇灵感美饌，邂逅一场味觉灵感之旅。

3 signature restaurants offer a world of unique dining experience, from Exotic to traditional, commence a culinary journey from here.

大堂酒廊

休闲而雅致的场所让人倍感舒适的区域。大堂酒廊特供日式精致茶点、下午茶、中式茶点、晚间提供多款葡萄酒和鸡尾酒，适合朋友聚会、商务应酬与休闲享受。

The Lounge

An elegant, comfortable and stylish Lobby Lounge, which offers freshly baked Japanese style pastries and cakes, alongside with premium tea, afternoon tea, cocktail and selections of wine.



一层，共33席位
1st floor, total 33 seats

全日餐厅 - 塞丽娜

纵情美味，塞丽娜设有开放式厨房，提供中西日式丰富早餐选择，午晚餐时段提供零点菜单，涵盖环球精选美味、常熟本地料理等特色菜品。餐厅特设日料区域，四个独立包房，全程日式贴心服务，沉浸式体验日本料理精髓。

All Day Dining - Serena

Savor in unparalleled dining experience in Serena, as a gourmet marketplace provides local and worldwide flavors. Open kitchen showcase the expert chefs prepare buffet breakfast and a-la-carte menu for lunch and dinner. Japanese dining area includes 4 individual private rooms which offers original Japanese taste and service.



一层，共170席位
(90席位，含室外16席位，日料区域80席位)

1st floor, total 170 seats
(90 seats, including outside area 16 seats, Japanese dining area 80 seats)

中餐厅 - 桃李

融合了传统中式和时尚现代的设计理念的桃李中餐厅，甄选新鲜食材及多样烹饪手法，呈现经典粤式风味和常熟地道美食。

Chinese Restaurant - Toh Lee

Combining traditional and modern design and décor concept, Toh-Lee Chinese Restaurant serves authentic Cantonese cuisines and Changshu local flavors crafted by talent chefs using fresh seasonal ingredients.



二层，共114席位（大厅38席位）
2nd floor, total 114 seats (Lobby 38 seats)



桃李中餐厅包房
Toh-Lee private dining room



桃李中餐厅包房 - 隐湖
（最大包房，可容纳20人用餐）
Toh-Lee private dining room - YINHU
（The largest private dining room, can accommodate up to 20 persons）



宴·千平空间

位于酒店2层的雅致现代的宴会会议空间，包含1,000平方米无柱式昆承宴会厅，层高近8米，可灵活分隔成两个宴会空间，此外还配有4间多功能厅和1间贵宾室，为浪漫婚礼、私人聚会和会议活动提供理想的场地选择。

会场	尺寸	面积	摆台容纳人数				
			宴会式	鸡尾酒式	课桌式	剧院式	回字形
大宴会厅	长*宽*高	平方米					
昆承	34.0*30.0*7.5	1,000	500	800	500	800	-
昆承 I	17.0*30.0*7.5	500	250	325	250	300	-
昆承 II	17.0*30.0*7.5	500	250	325	250	300	-
多功能厅							
文渊	9.0*5.0*3.45	46	12	30	-	-	12
明晖	6.0*5.0*3.45	30	12	20	13	18	12
风莲	6.0*5.0*3.45	30	12	20	13	18	12
泾川	10.6*5.0*3.45	53	15	35	-	-	16
贵宾厅	-	65	-	-	-	-	-

Space · Meeting *and* Events

Light-and-airy meeting and event spaces on 2nd Floor including 1,000m² pillar-less Grand Ballroom perfect for wedding, floor ceiling up to 8 meters and can flexible divide into 2 spaces. 4 function rooms and 1 VIP room are available for meetings or smaller group. Each space boasts A/V technology, and event planners are on hand to assist.

LOCATION	SIZE	AREA	CAPACITY					
			L*W*H	m ²	Banquet	Cocktail	Classroom	Theater
Grand Ballroom	34.0*30.0*7.5	1,000		500	800	500	800	-
Grand Ballroom I	17.0*30.0*7.5	500		250	325	250	300	-
Grand Ballroom II	17.0*30.0*7.5	500		250	325	250	300	-
Function Room I	9.0*5.0*3.45	46		12	30	-	-	12
Function Room II	6.0*5.0*3.45	30		12	20	13	18	12
Function Room III	6.0*5.0*3.45	30		12	20	13	18	12
Function Room IV	10.6*5.0*3.45	53		15	35	-	-	16
VIP Room	-	65		-	-	-	-	-



享·焕活身心

Wellness · Refresh *with* Vitality

无论是惬意畅游于城市之上，或尽情放松锻炼，释放一天的疲惫，位于酒店 3 层的健身中心都能助您焕活身心。位于同楼层的户外屋顶花园，连接公寓和酒店公共区域，面朝昆承湖美景，静赏朝夕更替。

With wraparound floor-to-ceiling windows, dip into infinity lap pool or take an energetic exercise, refresh yourself with vitality. Explore our thoughtful amenities in Fitness Center on 3rd floor, designed with your comfort in mind Outdoor Roof Garden connect public area of hotel and service apartment, capture the prized Kuncheng Lake view, from sunrise to sunset.

- 24 小时开放健身房
- 自然采光室内恒温泳池
- 日式汤池
- 桑拿房
- 儿童游乐室
- 棋牌室
- 空中屋顶花园
- 24-hour Gym
- Indoor Swimming Pool
- Japanese Hot Tub
- Sauna
- Kids Playroom
- Card Playroom
- Outdoor Roof Garden



室内泳池
Indoor Swimming Pool



日式汤池
Japanese Hot Tub